

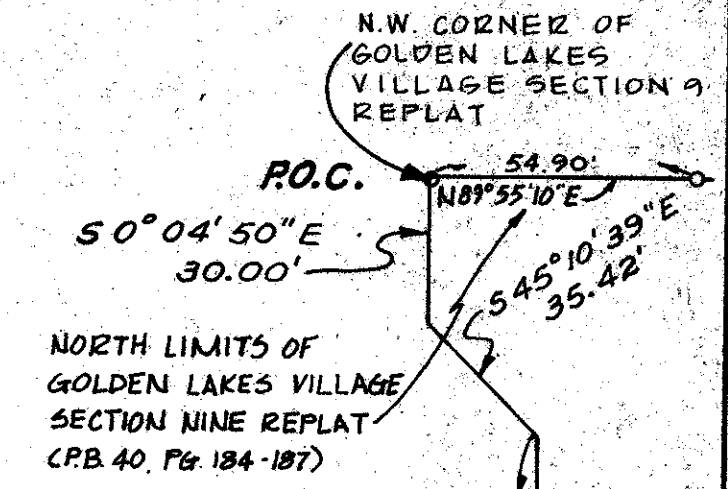
44/143

A PLANNED UNIT DEVELOPMENT

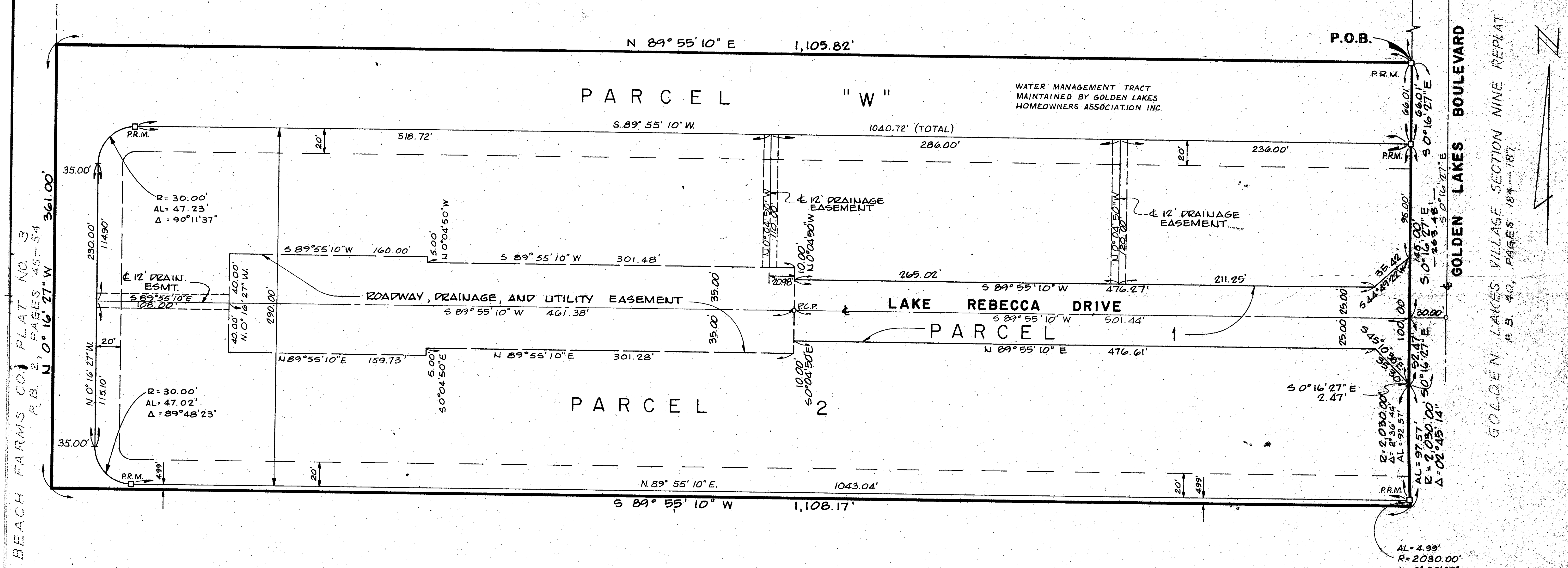
GOLDEN LAKES VILLAGE SECTION TWELVE

SHEET 2 OF 2

143



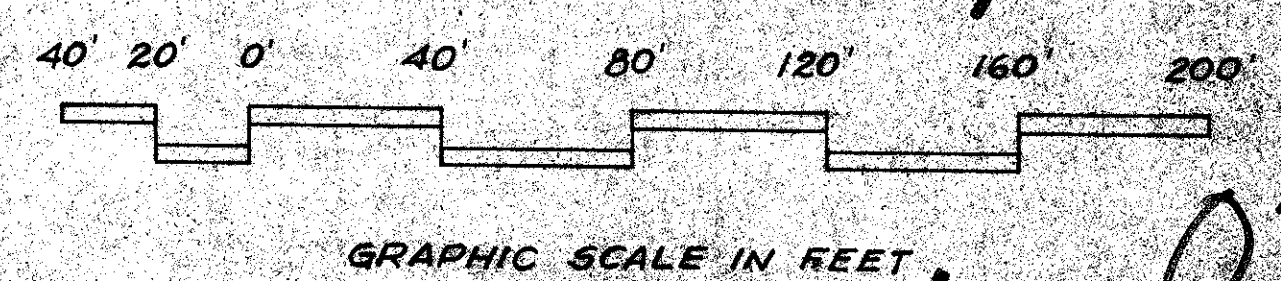
PALM BEACH FARMS CO., PLAT NO. 3
P.B. 2, PAGES 45-54



PALM BEACH FARMS CO., PLAT NO. 3
P.B. 2, PAGES 45-54
N 0° 16' 27" W 361.00'

GOLDEN LAKES VILLAGE SECTION NINE REPLAT
P.B. 40, PAGES 184-187

PALM BEACH FARMS CO., PLAT NO. 3
P.B. 2, PAGES 45-54



28,29-43-42

0251-300

44/143

Field Book No. G-80 Pg. 54	ROBERT E. OWEN & ASSOCIATES, INC. ENGINEERS - PLANNERS - SURVEYORS WEST PALM BEACH FLORIDA	GOLDEN LAKES VILLAGE SECTION TWELVE SHEET 2 OF 2 SHEETS	Job No. 80-1136
Design R. BIBY			Scale 1" = 40'
Drawn A. FIELD			Date JAN 1982
Checked			Sheet 2